

ZTF Zirnhelt Timber Frames

Sustainable by Design

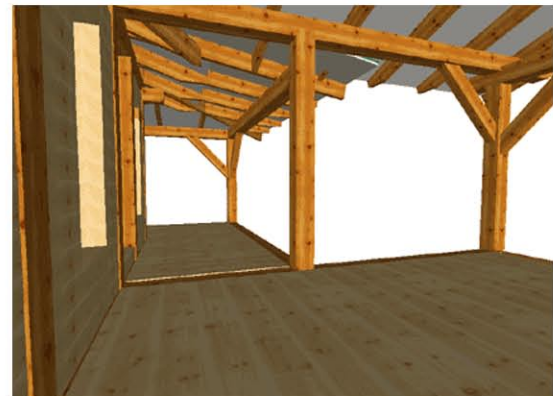
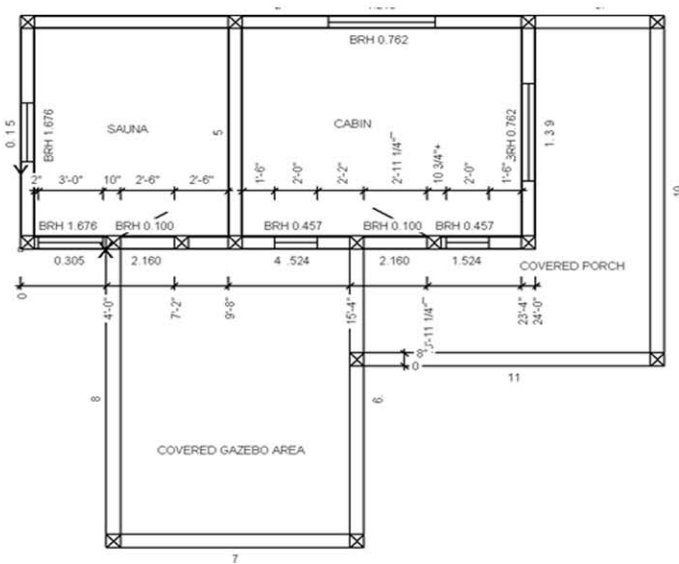
Fly Fisher's Retreat



Side View



Front View



Porch View

This plan designed by: Zirnhelt Timber Frames

This plan was designed to have a sauna, outdoor eating area, and a room for either beds, cooking or fishing tackle. The building is 24' x 10' plus a covered porch and gazebo.

Call or email us to start your sustainable building project. Visit our site, meet our crew and tour a Zirnhelt Timber Frame home.

We look forward to working with you!

www.ZTFrames.com

250.243.0055 | cell: 250.392.0103 | fax 250.243.2419 | info@ZTFrames.com