

# ZTF Zirnhelt Timber Frames

## *Pioneer Seeds*

This commercial building is located in Edmonton Alberta. The timber design & installation was provided by Byldan Woodworks Ltd. [www.byldan.ca](http://www.byldan.ca)



*Healthy Homes for Sustainable Living*

---

[www.ZTFrames.com](http://www.ZTFrames.com)

250.243.0055 | fax 250.243.2419 | [info@ZTFrames.com](mailto:info@ZTFrames.com)

# ZTF Zirnhelt Timber Frames

*Pioneer Seeds*



*Healthy Homes for Sustainable Living*

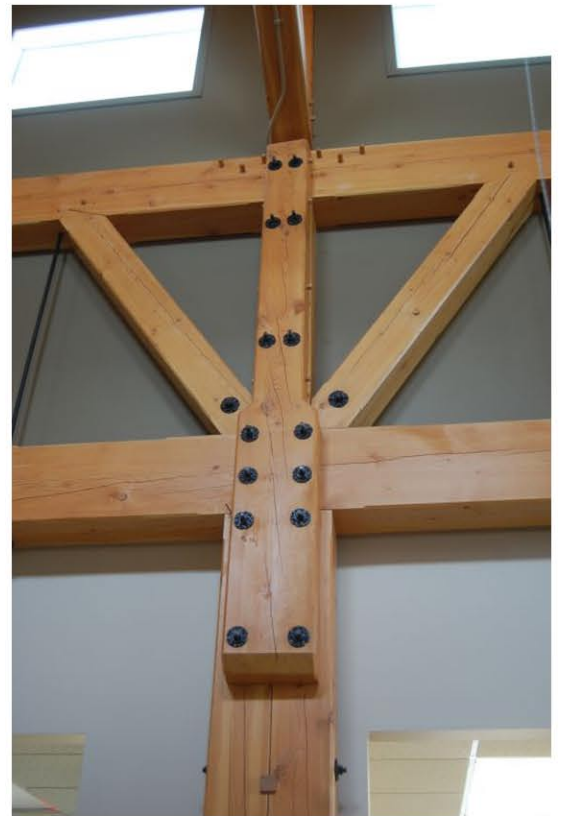
---

[www.ZTFrames.com](http://www.ZTFrames.com)

250.243.0055 | fax 250.243.2419 | [info@ZTFrames.com](mailto:info@ZTFrames.com)

# ZTF Zirnhelt Timber Frames

*Pioneer Seeds*



*Healthy Homes for Sustainable Living*

[www.ZTFrames.com](http://www.ZTFrames.com)

250.243.0055 | fax 250.243.2419 | [info@ZTFrames.com](mailto:info@ZTFrames.com)