

# ZTF Zirnhelt Timber Frames

*Sustainable by Design*

## *The Thompson River*

### *At a Glance:*

<i>Main</i>	<i>2,500 sq ft</i>
<i>Upper</i>	<i>1,450 sq ft</i>
<i>Basement</i>	<i>2,600 sq ft</i>
<i>Bedrooms</i>	<i>5</i>
<i>Bathrooms</i>	<i>3.5</i>

*Total living space 6,550 sq ft*



*This home designed by: Original Home Designs*

**This home is located outside of Kamloops BC on the Thompson River. This home has many special features including a private master bedroom attached to the main house by a timber and glass walk way. See the floor plans on the next page for more details.**

**Call or email us to start your sustainable building project. Visit our site, meet our crew and tour a Zirnhelt Timber Frame home.**

**We look forward to working with you!**

---

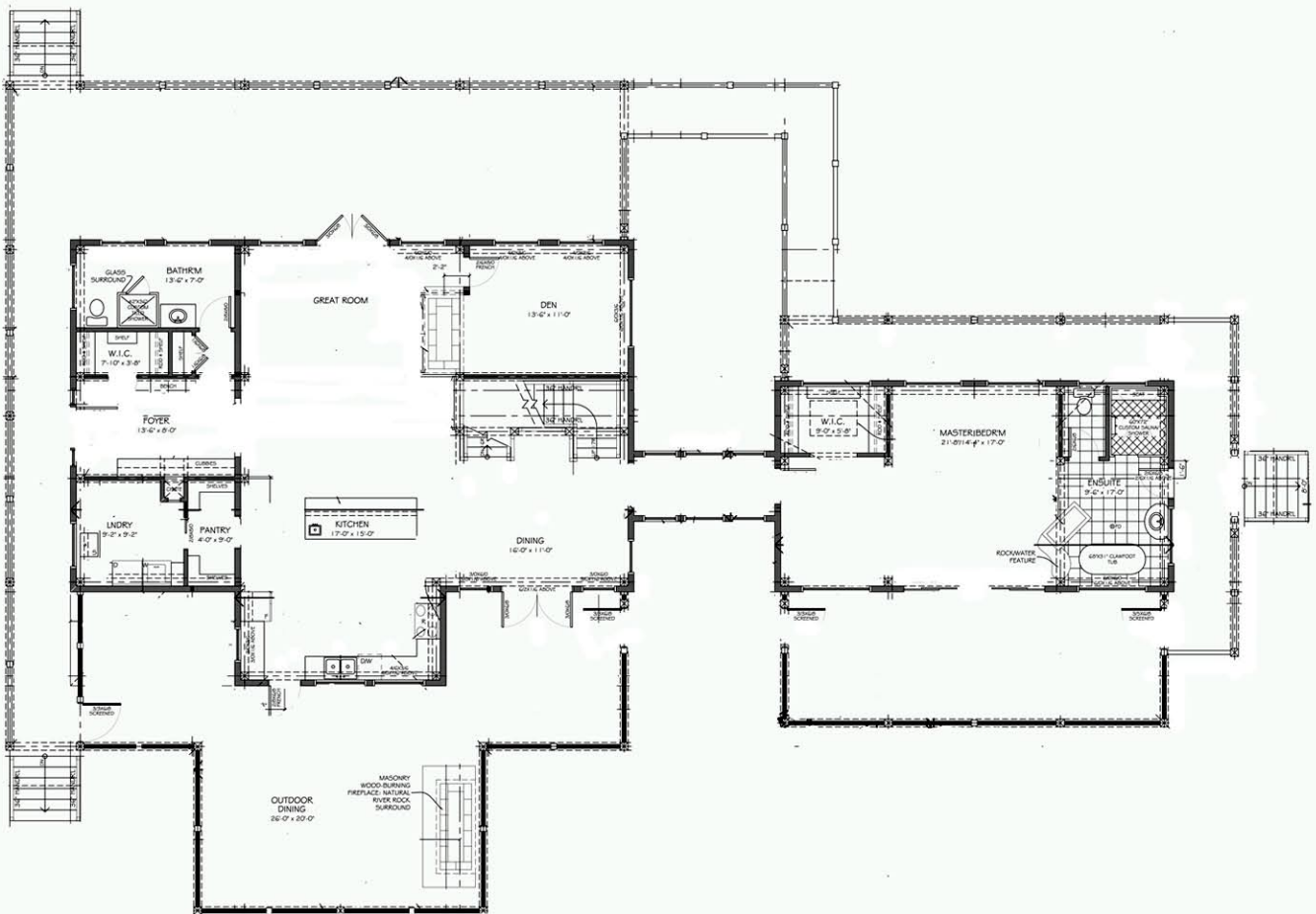
**[www.ZTFrames.com](http://www.ZTFrames.com)**

250.243.0055 | cell: 250.392.0103 | fax 250.243.2419 | [info@ZTFrames.com](mailto:info@ZTFrames.com)

# ZTF Zirnhelt Timber Frames

## *The Thompson River*

### Main Level Floor Plan



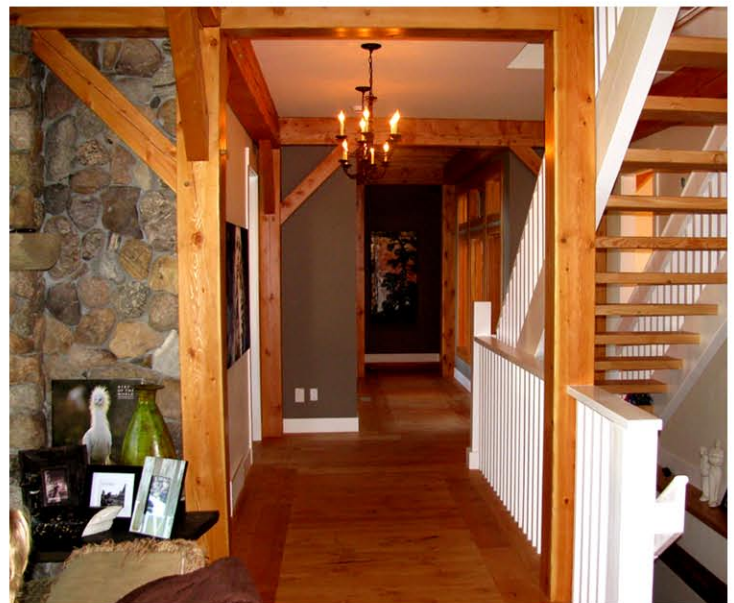
*Healthy Homes for Sustainable Living*

[www.ZTFrames.com](http://www.ZTFrames.com)

250.243.0055 | fax 250.243.2419 | [info@ZTFrames.com](mailto:info@ZTFrames.com)

# ZTF Zirnhelt Timber Frames

*The Thompson River*



[www.ZTFrames.com](http://www.ZTFrames.com)

250.243.0055 | fax 250.243.2419 | [info@ZTFrames.com](mailto:info@ZTFrames.com)

# ZTF Zirnhelt Timber Frames

*The Thompson River*



[www.ZTFrames.com](http://www.ZTFrames.com)

250.243.0055 | fax 250.243.2419 | [info@ZTFrames.com](mailto:info@ZTFrames.com)