

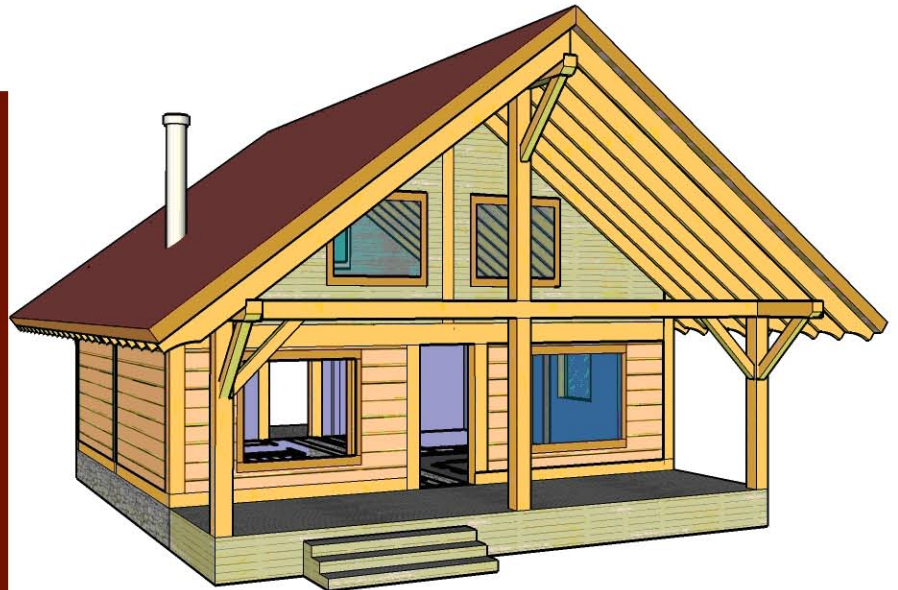
ZTF Zirnhelt Timber Frames

Sustainable by Design

26' x 26' Cottage

At a Glance:

<i>Main</i>	<i>676 sq ft</i>
<i>Loft (optional)</i>	<i>338</i>
<i>Total living space</i>	<i>1014 sq ft</i>
<i>Bedrooms</i>	<i>1-3</i>
<i>Bathrooms</i>	<i>1</i>
<i>Covered Porches</i>	<i>208 sq ft</i>
<i>Total footprint</i>	<i>884 sq ft</i>



This plan designed by: Zirnhelt Timber Frames

This 26 x 26 plan creates a simple yet beautiful home or vacation cottage. The building has all the elements of a complete home...just a little smaller. You could use the floor plans as drawn with 3 bedrooms or vault the front half over the dining and living area to leave just one bedroom upstairs. The side walls are taller to provide more space in the upstairs than you might expect.

This plan has a covered porch off the back and a covered entrance on the front.

Call or email us to start your sustainable building project. Visit our site, meet our crew and tour a Zirnhelt Timber Frame home.

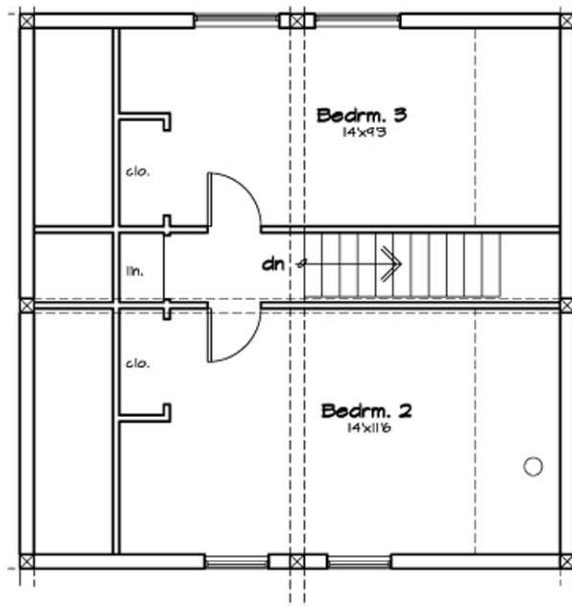
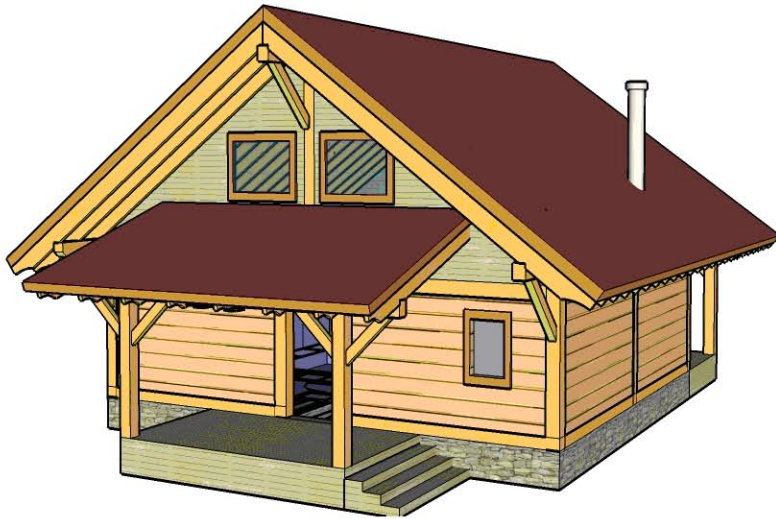
We look forward to working with you!

www.ZTFrames.com

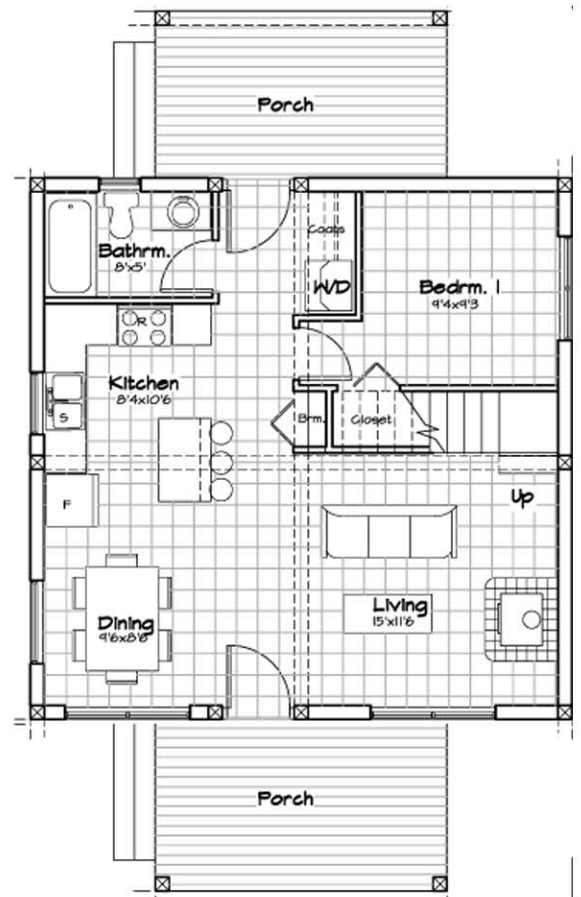
250.243.0055 | cell: 250.392.0103 | fax 250.243.2419 | info@ZTFrames.com

ZTF Zirnhelt Timber Frames

26' x 26' Cottage



Optional Loft Floor Plan



Main Level Floor Plan

Healthy Homes for Sustainable Living

www.ZTFrames.com

250.243.0055 | fax 250.243.2419 | info@ZTFrames.com