

# ZTF Zirnhelt Timber Frames

*Sustainable by Design*

## *Parker Lake Cottage*

### *At a Glance:*

<i>Main</i>	<i>576 sq ft</i>
<i>Loft</i>	<i>234 sq ft</i>
<i>Total living space</i>	<i>810 sq ft</i>
<i>Bedrooms</i>	<i>1</i>
<i>Bathrooms</i>	<i>1</i>



Designed by: Zirnhelt Timber Frames

The Parker Lake is one of the smallest cottages we've built that has everything including a staking washer and dryer on the main floor. To keep costs down, the front deck is only partially covered by a 6' overhang. Taller side walls give extra head room in the loft which has a single shed dormer.

Call or email us to start your sustainable building project. Visit our site, meet our crew and tour a Zirnhelt Timber Frame home.

We look forward to working with you!

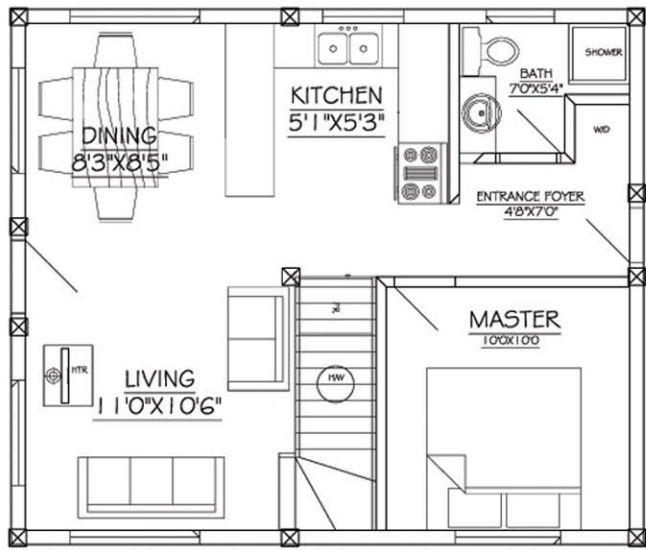
---

[www.ZTFrames.com](http://www.ZTFrames.com)

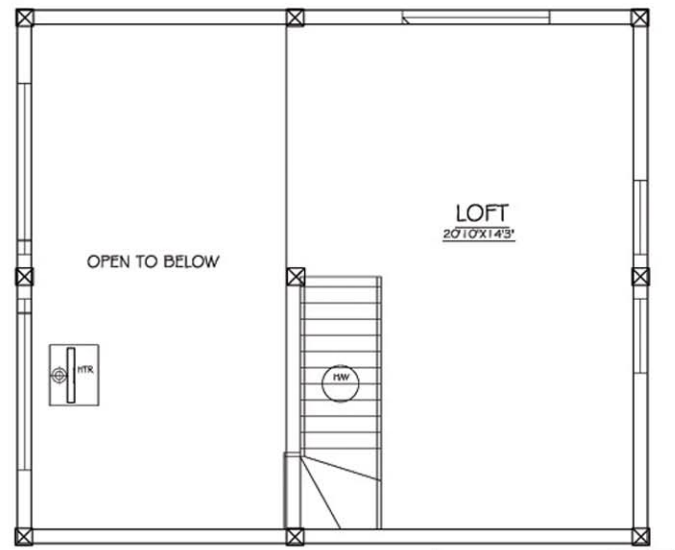
250.243.0055 | cell: 250.392.0103 | fax 250.243.2419 | [info@ZTFrames.com](mailto:info@ZTFrames.com)

# ZTF Zirnhelt Timber Frames

## *Parker Lake Cottage*



Main Level Floor Plan



Loft Floor Plan

*Healthy Homes for Sustainable Living*

[www.ZTFrames.com](http://www.ZTFrames.com)

250.243.0055 | fax 250.243.2419 | [info@ZTFrames.com](mailto:info@ZTFrames.com)