

ZTF Zirnhelt Timber Frames

Sustainable by Design

S&J Country Cottage

At a Glance:

<i>Main</i>	<i>572 sq ft</i>
<i>Loft</i>	<i>286 sq ft</i>
<i>Total living space</i>	<i>858 sq ft</i>
<i>Bedrooms</i>	<i>1</i>
<i>Bathrooms</i>	<i>1.5</i>
<i>Covered Porches</i>	<i>176 sq ft</i>
<i>Total footprint</i>	<i>1,034 sq ft</i>



Designed by: Zirnhelt Timber Frames

This cottage was built on the Zirnhelt Ranch for owner Sam Zirnhelt and his wife Jill in 2005.

With only 572 sq ft on the main floor, high ceilings were needed to give the feeling of a full sized house. Vertical space has been used to the fullest by adding taller cupboards in the kitchen and bathroom. The loft serves as the master bedroom and has a half bathroom in it. In 2010 this home will receive an addition on the south wall.

Call or email us to start your sustainable building project. Visit our site, meet our crew and tour a Zirnhelt Timber Frame home.

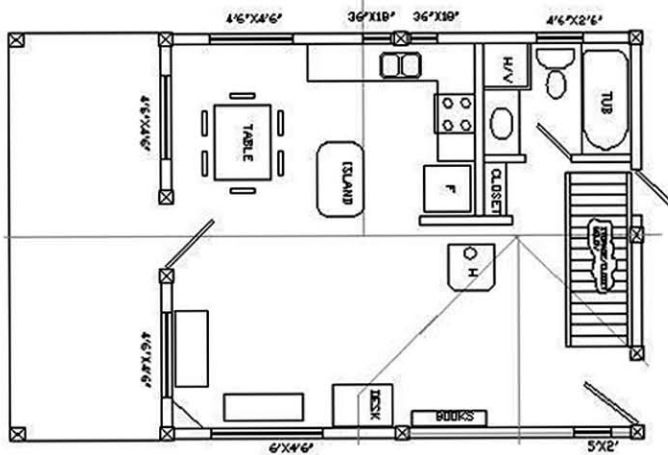
We look forward to working with you!

www.ZTFrames.com

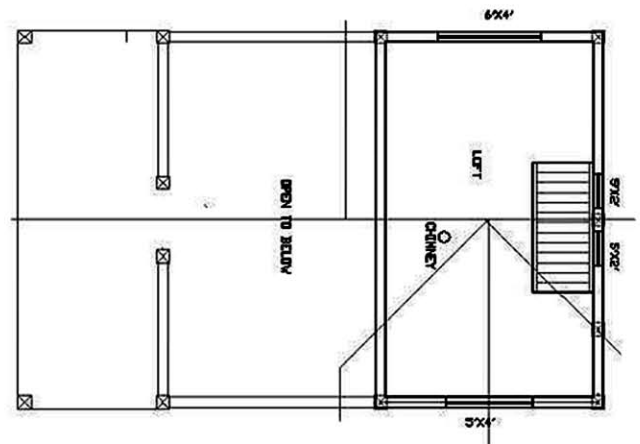
250.243.0055 | cell: 250.392.0103 | fax 250.243.2419 | info@ZTFrames.com

ZTF Zirnhelt Timber Frames

S&J Country Cottage



Main Level Floor Plan



Loft Floor Plan

Healthy Homes for Sustainable Living

www.ZTFrames.com

250.243.0055 | fax 250.243.2419 | info@ZTFrames.com