

# ZTF Zirnhelt Timber Frames

## *Gambier Oceanside Cottage*

*Sustainable by Design*



*This cabin designed by: Zirnhelt Timber Frames*

### *At a Glance:*

<i>Main (14' x 14')</i>	<i>196 sq ft</i>
<i>Sleeping loft (7' x 14')</i>	<i>98 sq ft</i>
<i>Total living space</i>	<i>294 sq ft</i>

*The Gambier Island Cottage was barged in and set-up by hand on a steep site overlooking the ocean. The main floor interior is only 14'x 14' but with the loft and the outdoor cooking dining area this small cottage provides a great family holiday base and in the future will serve as a guest house/ beach front barbeque area. A small building near the water combined with a larger home a bit further from the beach helps make great use of the ocean frontage while keeping site disturbance to a minimum.*

*Call or email us today to design your guest cabin. We look forward to working with you!*

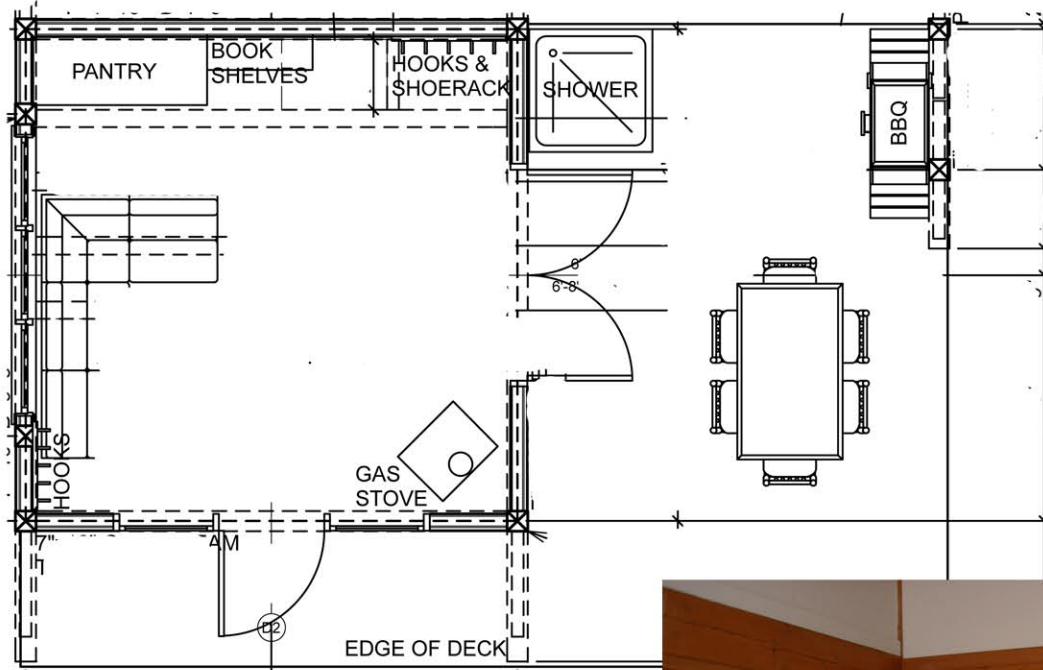
**[www.ZTFrames.com](http://www.ZTFrames.com)**

250.243.0055 | cell: 250.392.0103 | fax 250.243.2419 | [info@ZTFrames.com](mailto:info@ZTFrames.com)

# ZTF Zirnhelt Timber Frames

## *Gambier Oceanside Cottage*

### Main Level Floor Plan



*Healthy Homes for Sustainable Living*

[www.ZTFrames.com](http://www.ZTFrames.com)

250.243.0055 | fax 250.243.2419 | [info@ZTFrames.com](mailto:info@ZTFrames.com)