

# ZTF Zirnhelt Timber Frames

*Sustainable by Design*

## *Bragg Creek Country Home*

### *At a Glance:*

<i>Main (36' x 36')</i>	<i>1,296 sq ft</i>
<i>Upper</i>	<i>864 sq ft</i>
<i>Basement</i>	<i>1,296 sq ft</i>
<i>Bedrooms</i>	<i>3</i>
<i>Bathrooms</i>	<i>2</i>

*Total living space 3,465 sq ft*



*This home designed by: Zirnhelt Timber Frames*

At 36' x 36' on the main floor with a full daylight basement and 2/3 loft, this home is spacious with an elegant presence and carefully designed simplicity that brings luxury and affordability together. Like all Zirnhelt Timber Frames, it is completely handcrafted with traditional mortise and tenon joinery. Floor plans for this classic frame can easily accommodate up to six bedrooms with exceptional light and space for entertaining games, media and exercise rooms. Large covered porches protect your investment and make all-season outdoor living literally at your doorstep. The exceptional strength and beauty of the Queen Truss' are a great fit for this design.

Call or email us to start your sustainable building project. Visit our site, meet our crew and tour a Zirnhelt Timber Frame home.

**We look forward to working with you!**

---

**[www.ZTFrames.com](http://www.ZTFrames.com)**

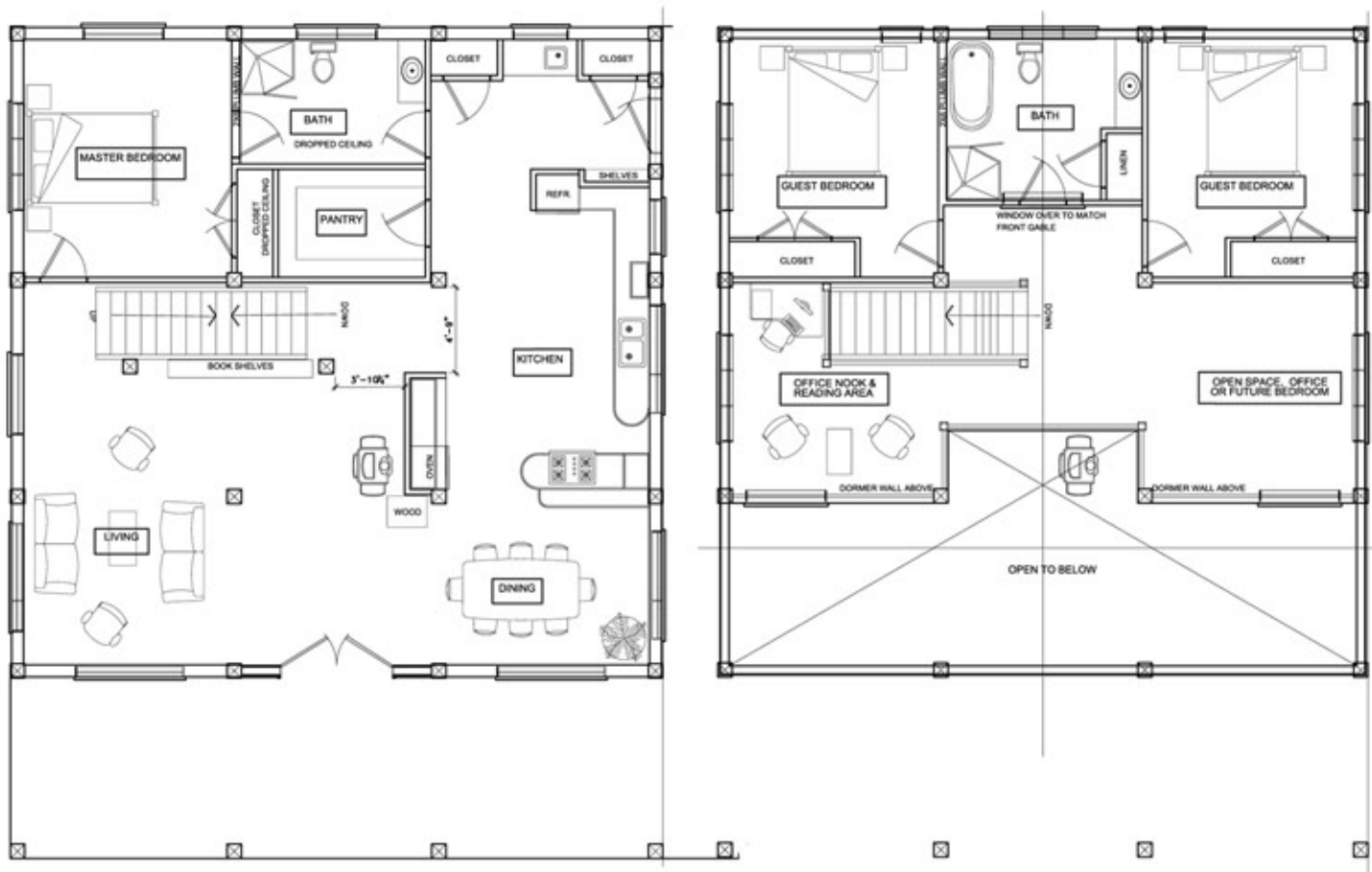
250.243.0055 | cell: 250.392.0103 | fax 250.243.2419 | [info@ZTFrames.com](mailto:info@ZTFrames.com)

# ZTF Zirnhelt Timber Frames

## *Bragg Creek Country Home*

Main Level Floor Plan

Loft Floor Plan



*Healthy Homes for Sustainable Living*

[www.ZTFrames.com](http://www.ZTFrames.com)

250.243.0055 | fax 250.243.2419 | [info@ZTFrames.com](mailto:info@ZTFrames.com)