

ZTF Zirnhelt Timber Frames

Sustainable by Design

Kootenay Cottage

At a Glance:

Main	988 sq ft
Basement	988 sq ft
Bedrooms	3
Bathrooms	2
Total living space	1,976 sq ft

Covered Entry and Deck



*This home designed by: Harrison Design
and Zirnhelt Timber Frames*



The Kootenay Cottage is a great family getaway or compact retirement home. The entire main floor including the central entryway has vaulted ceilings and a view straight through the great room. Despite the small footprint, all the essentials (master bedroom, laundry, storage) are on the main floor. Large decks extend the living space overlooking Kootenay Lake. The open living spaces (kitchen, dining and living) all enjoy the view with bedrooms and bathrooms kept to the back. This plan can be customized with a variety of wall and roof systems which can be pre-fabricated by Zirnhelt Timber Frames to get you to lock-up quickly.

Call or email us to start your sustainable building project. Visit our site, meet our crew and tour a Zirnhelt Timber Frame home.

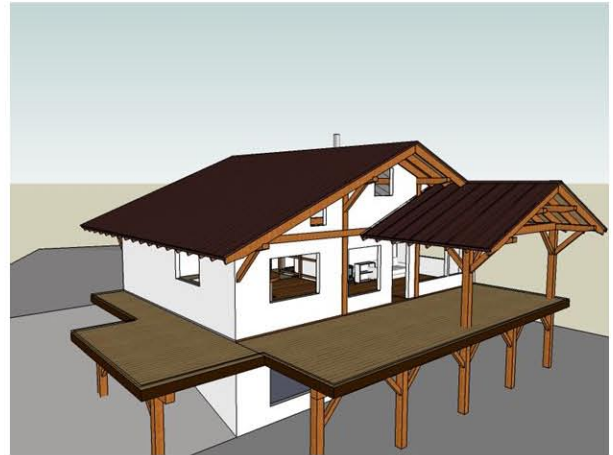
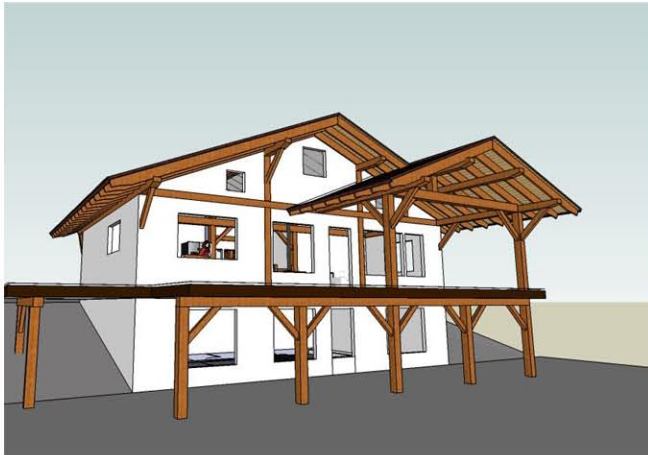
We look forward to working with you!

www.ZTFrames.com

250.243.0055 | cell: 250.392.0103 | fax 250.243.2419 | info@ZTFrames.com

ZTF Zirnhelt Timber Frames

Kootenay Cottage



Healthy Homes for Sustainable Living

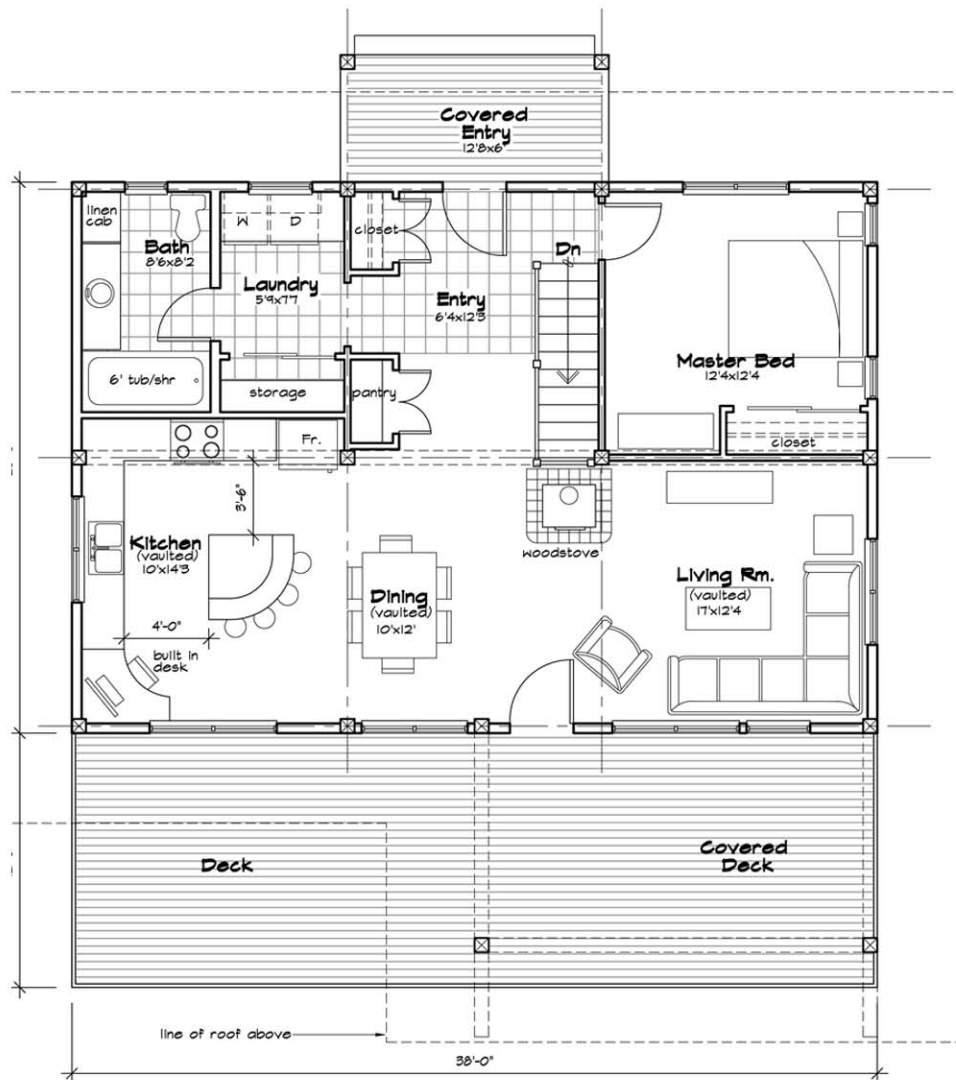
www.ZTFrames.com

250.243.0055 | fax 250.243.2419 | info@ZTFrames.com

ZTF Zirnhelt Timber Frames

Kootenay Cottage

Main Level Floor Plan



Healthy Homes for Sustainable Living

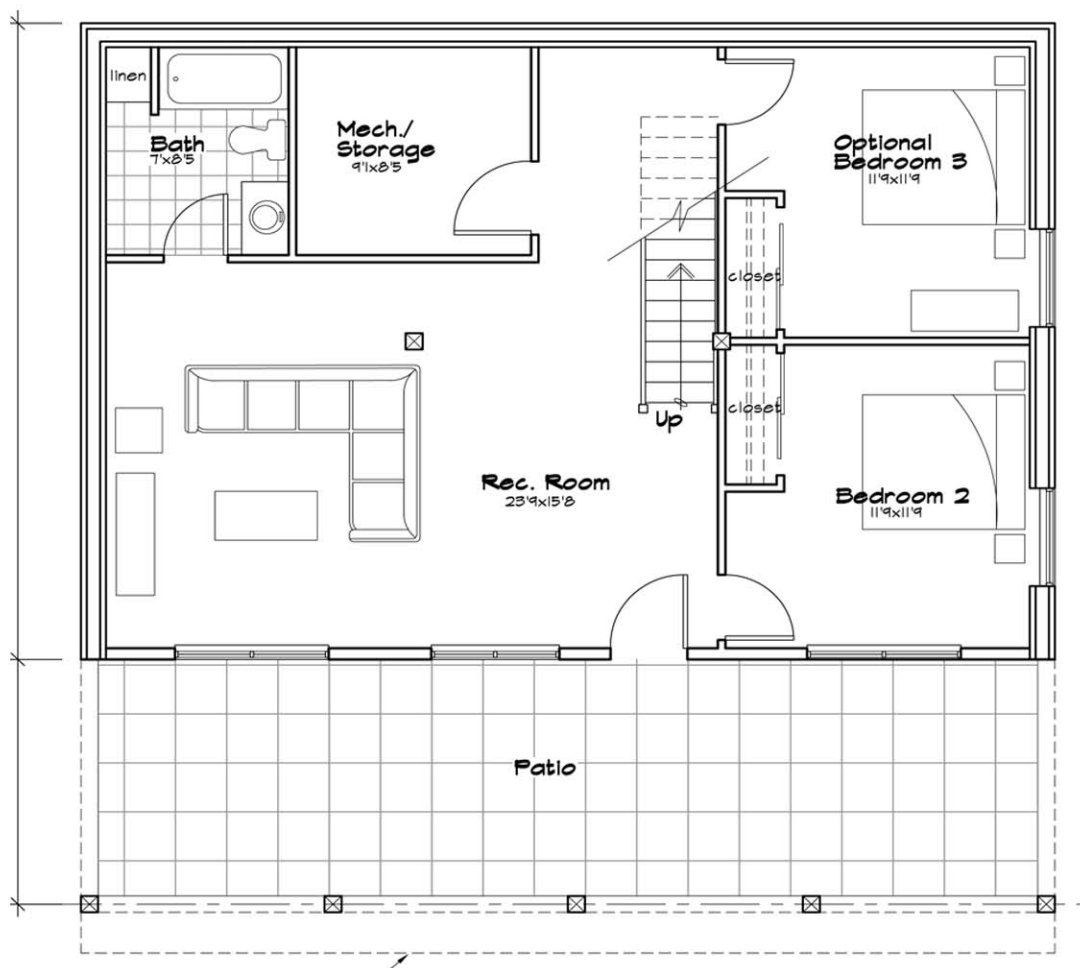
www.ZTFrames.com

250.243.0055 | fax 250.243.2419 | info@ZTFrames.com

ZTF Zirnhelt Timber Frames

Kootney Cottage

Lower Level Floor Plan



Healthy Homes for Sustainable Living

www.ZTFrames.com

250.243.0055 | fax 250.243.2419 | info@ZTFrames.com