



# Fosberg



Designed By

Zirnhelt Timber Frames & Bear Design

The Fosberg is a full traditional timber frame with 8" exterior wall panels and R-50 vaulted roof system. This great family get-a-way cottage or compact timber frame home is nestled into the hillside at Troll Ski Resort. The main floor features vaulted timber ceilings and a great view from the extended living room. There is a covered gable entry on main level and ground level covered entry to the basement creating easy access to both levels. The covered deck off the dining room is perfect for outdoor dining or perhaps a hot tub. This plan provides the option for 4 or 5 bedrooms depending on basement and loft configuration. Tall side walls create plenty of room in the loft without the need for dormers. A central wood heater brings provides ambience and easily heats this energy-efficient home.

**Sustainable by  
Design**

## Overview

Main 1,024 sq ft.

Basement 912 sq ft.

Loft 538 sq ft.

Bedrooms 3

Bathrooms 3 1/2

Total Living Space 2,474 sq ft.

3031 Highway 97 South, 150 Mile House BC | <http://ztframes.com> | Email: [info@ztframes.com](mailto:info@ztframes.com)  
Office: (250) 296-3499 | Fax: (250) 296-3499



**ZIRNHELT**  
Timber Frames



NORTHWEST  
PERSPECTIVE VIEW

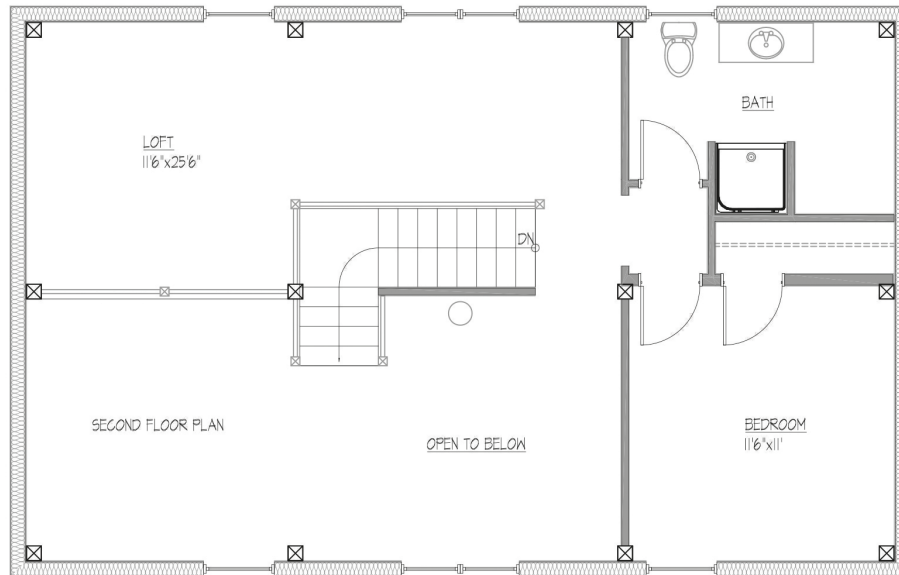
# Fosberg



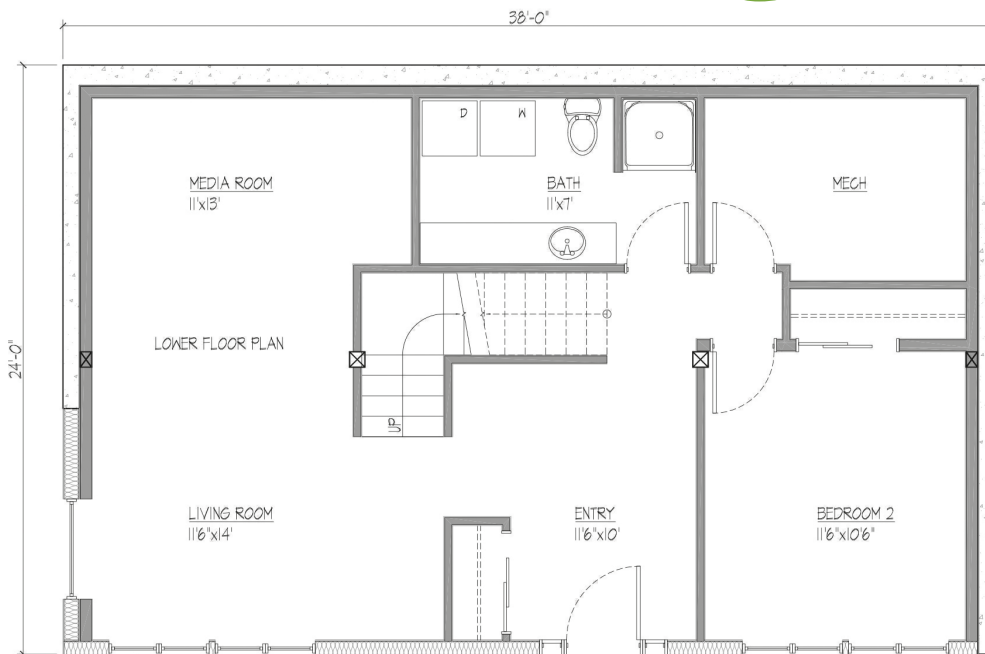
3031 Highway 97 South, 150 Mile House BC | <http://ztframes.com> | Email: [info@ztframes.com](mailto:info@ztframes.com)  
Office: (250) 296-3499 | Fax: (250) 296-3499



**ZIRNHELT**  
Timber Frames



# Fosberg



3031 Highway 97 South, 150 Mile House BC | <http://ztframes.com> | Email: [info@ztframes.com](mailto:info@ztframes.com)  
Office: (250) 296-3499 | Fax: (250) 296-3499