

ZTF Zirnhelt Timber Frames

Sustainable by Design

Lakeside Rancher

At a Glance:

<i>Dimensions</i>	<i>30' x 40'</i>
<i>Main</i>	<i>1,200 sq ft</i>
<i>Daylight Bsmt</i>	<i>1,200 sq ft</i>
<i>Bedrooms</i>	<i>2</i>
<i>Bathrooms</i>	<i>2.5</i>
<i>Total living space</i>	<i>2,400 sq ft</i>



This home plan designed by: Zirnhelt Timber Frames and
EcoCentric Design



BUILDING NATURALLY

This is a special project for us as it is being built with good friends, one of whom was born and raised in Beaver Valley. Like all our homes, careful design work is critical as we know the homes we build will be around for centuries to come. This plan takes full advantage of its lake front setting with a spacious great room filled with natural light and a ceiling full of compound timber joinery. Perfect for entertaining big groups with plenty of cozy spaces for those winter nights when you want to absorb the tranquility of rural life.

Call or email us to start your sustainable building project. Visit our site, meet our crew, and tour a Zirnhelt Timber Frame home.

We look forward to working with you!

www.ZTFrames.com

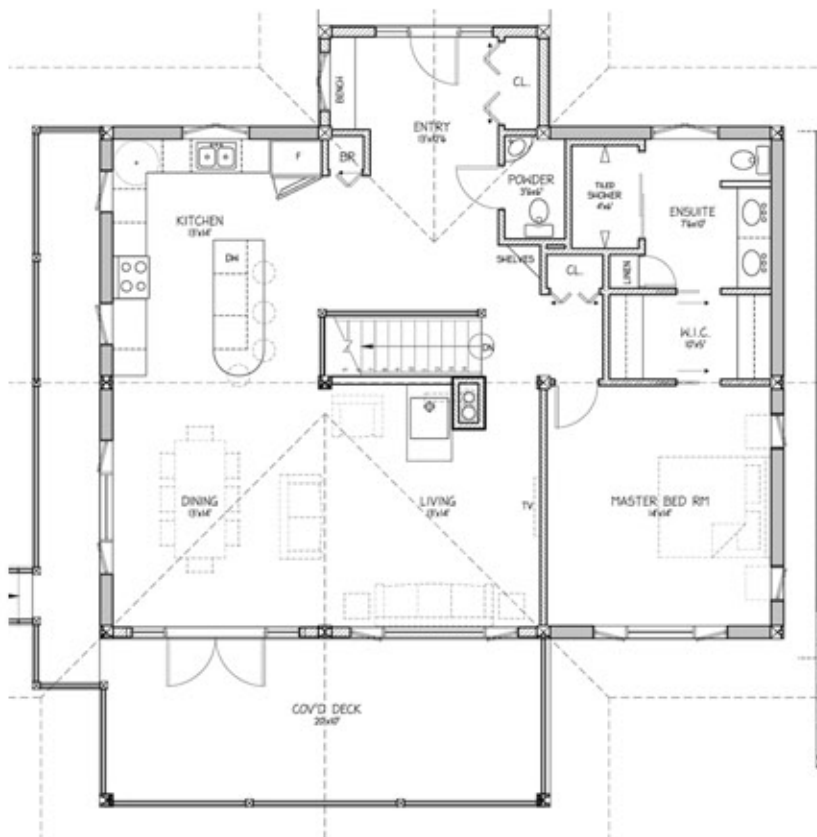
250.243.0055 | cell: 250.392.0103 | fax 250.243.2419 | info@ZTFrames.com

ZTF Zirnhelt Timber Frames

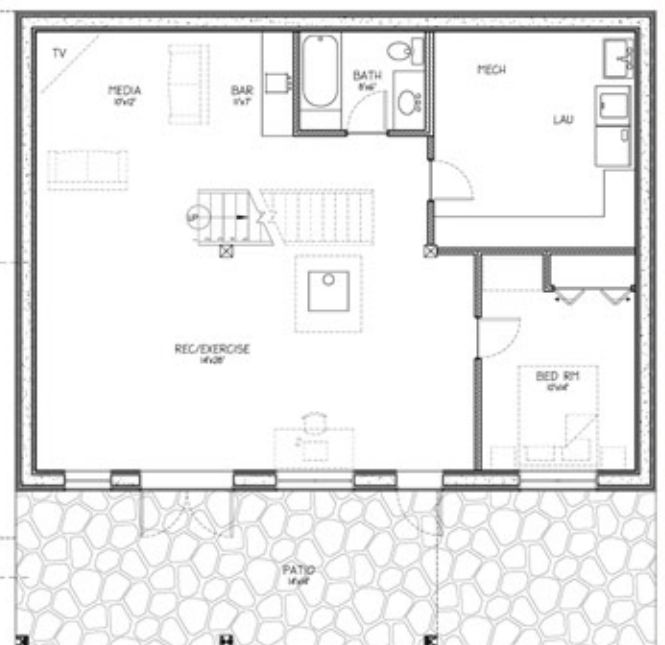
Lakeside Rancher



Main Level Floor Plan



Basement Floor Plan



Healthy Homes for Sustainable Living

www.ZTFrames.com

250.243.0055 | fax 250.243.2419 | info@ZTFrames.com

ZTF Zirnhelt Timber Frames

Lakeside Rancher



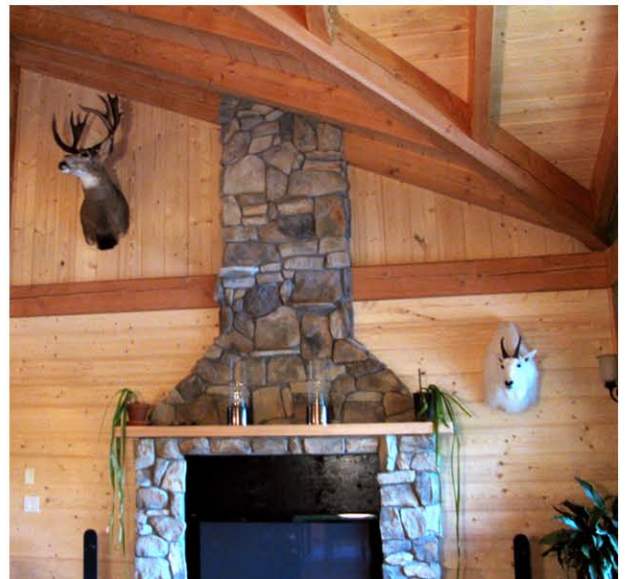
Healthy Homes for Sustainable Living

www.ZTFrames.com

250.243.0055 | fax 250.243.2419 | info@ZTFrames.com

ZTF Zirnhelt Timber Frames

Lakeside Rancher



Healthy Homes for Sustainable Living

www.ZTFrames.com

250.243.0055 | fax 250.243.2419 | info@ZTFrames.com