

ZTF Zirnhelt Timber Frames

Sustainable by Design

Lakeside Retirement

At a Glance:

HOUSE

Main	1,100 sq ft
Daylight Bsmt	1,100 sq ft
Loft	500 sq ft
Total living space	2,700 sq ft
Bedrooms	2-3
Bathrooms	2.5

GARAG/GUEST SUITE

Garage 26'x 26'	676 sq ft
Suite 26' x 22'	572 sq ft



This home plan designed by: Harrison Design

This elegant yet modest semi-vaulted timber frame home provides for cozy comfort, excellent lighting and views with easy access to the outdoors on a minimal (1100 square foot) footprint. Multiple roof lines with exposed beams showcase the art of hand-crafted timberwork. The guest room above the garage provides comfort and privacy for your longer term guests (or offspring needing temporary lodging!). The basement has plenty of storage a large guest room and rec room all with lake view windows and a walk out door.

Call or email us to start your sustainable building project. Visit our site, meet our crew, and tour a Zirnhelt Timber Frame home.

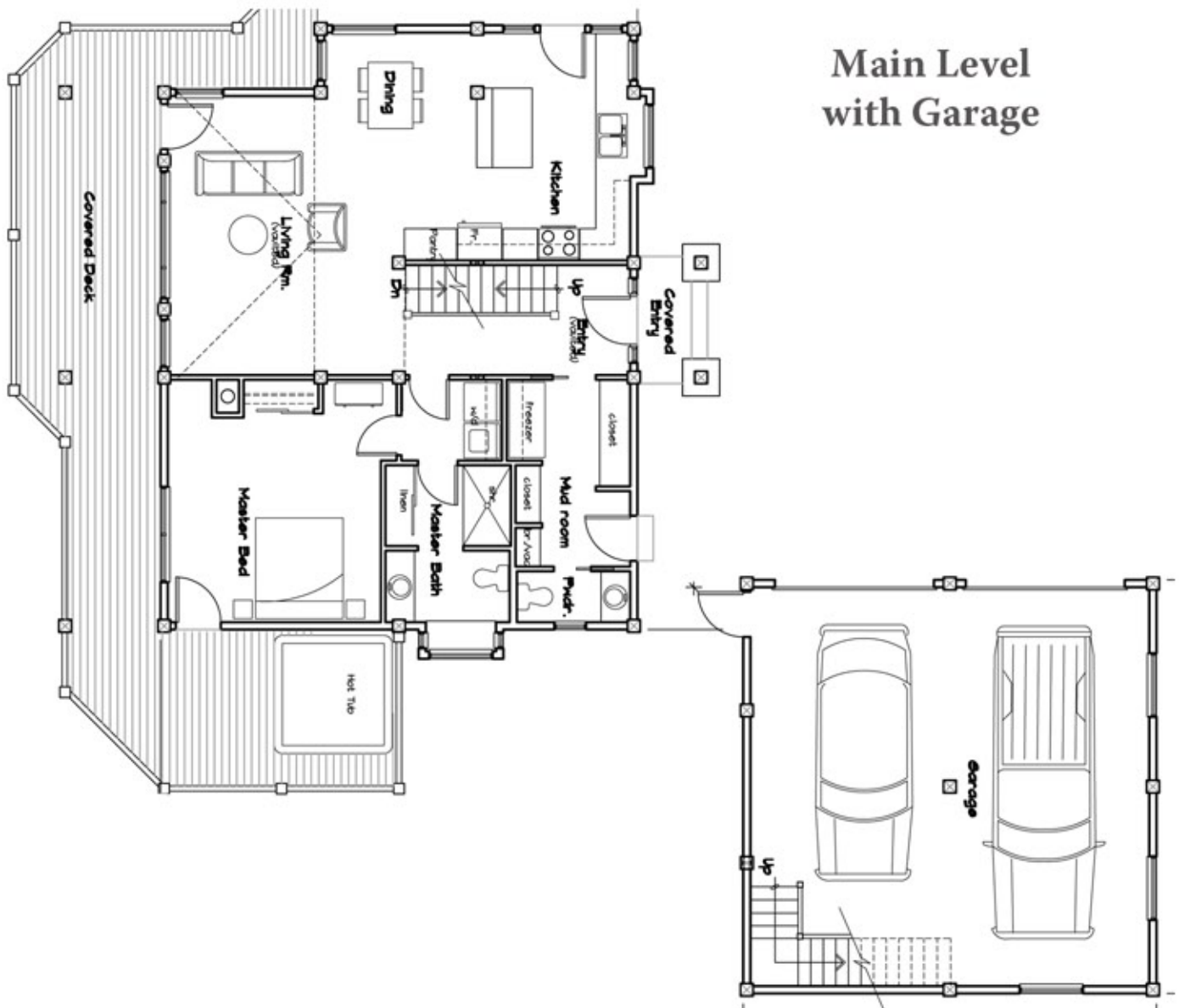
We look forward to working with you!

www.ZTFrames.com

250.243.0055 | cell: 250.392.0103 | fax 250.243.2419 | info@ZTFrames.com

ZTF Zirnhelt Timber Frames

Lakeside Retirement



Main Level
with Garage

Healthy Homes for Sustainable Living

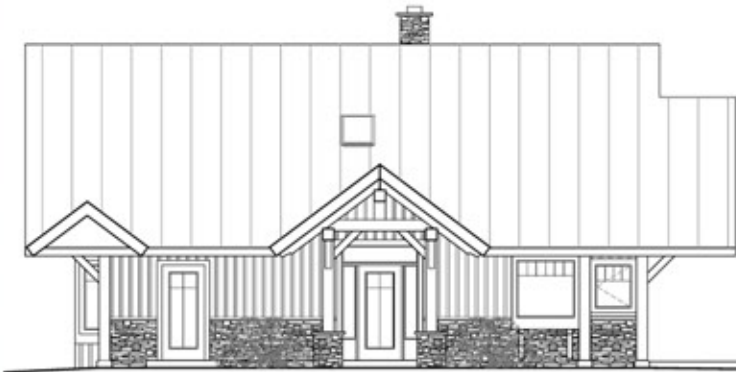
www.ZTFrames.com

250.243.0055 | fax 250.243.2419 | info@ZTFrames.com

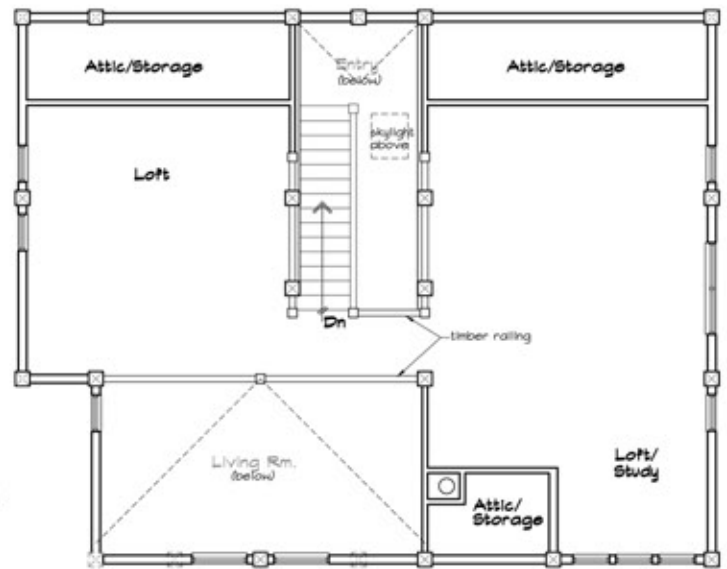
ZTF Zirnhelt Timber Frames

Lakeside Retirement

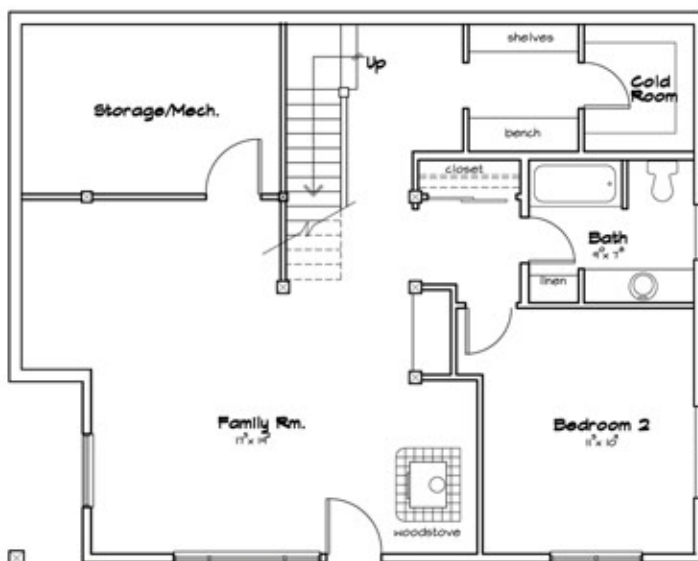
Rear Entrance View



Loft Floor Plan



Basement Floor Plan



Lakeside (front) View



Healthy Homes for Sustainable Living

www.ZTFrames.com

250.243.0055 | fax 250.243.2419 | info@ZTFrames.com