

ZTF Zirnhelt Timber Frames

Sustainable by Design

Miller's Horsefly Home

At a Glance:

<i>Dimensions</i>	<i>29' x 40'</i>
<i>Main</i>	<i>1,160 sq ft</i>
<i>Daylight Bsmt</i>	<i>1,160 sq ft</i>
<i>Bedrooms</i>	<i>2-3</i>
<i>Bathrooms</i>	<i>2</i>
<i>Total living space</i>	<i>2,320 sq ft</i>



This home plan designed by: Harrison Design
and Zirnhelt Timber Frames



This 2,320 sq. ft. timber frame home with square-timber infill has all the essentials on the main floor and plenty of extra in the basement for exercise, guests and media. Miller's Horsefly Home was designed as an affordable and comfortable retirement home with plenty of covered outdoor space suited to the northern climate.

Call or email us to start your sustainable building project. Visit our site, meet our crew, and tour a Zirnhelt Timber Frame home.

We look forward to working with you!

www.ZTFrames.com

250.243.0055 | cell: 250.392.0103 | fax 250.243.2419 | info@ZTFrames.com

ZTF Zirnhelt Timber Frames

Miller's Horsefly Home

Side View



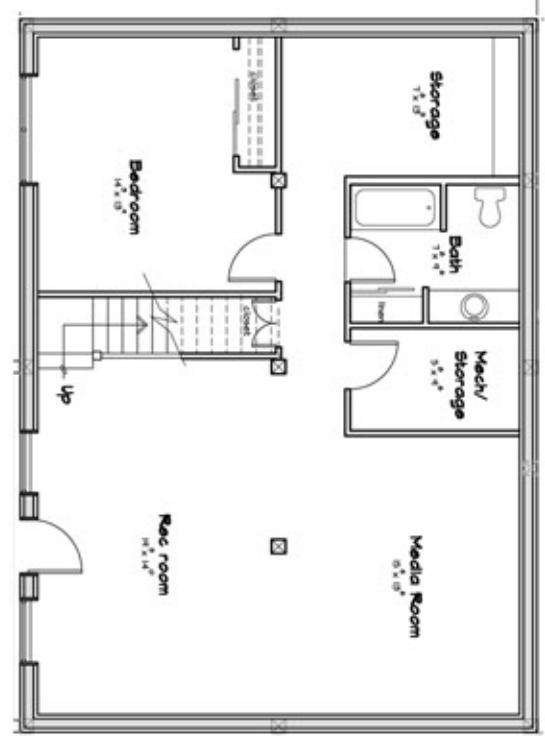
Rear View



Main Level Floor Plan



Lower Level Floor Plan



Healthy Homes for Sustainable Living

www.ZTFrames.com

250.243.0055 | fax 250.243.2419 | info@ZTFrames.com