

# ZTF Zirnhelt Timber Frames

*Sustainable by Design*

## *Troll Mountain Ski Chalet*

### *At a Glance:*

Main (26' x 38')	988 sq ft
Bsmt	988 sq ft
Covered Entry (8' x 12')	96 sq ft
Bedrooms	2
Bathrooms	2.5
Total living space	1,976 sq ft
Total Footprint	1,084 sq ft



*This plan designed by: Zirnhelt Timber Frames and EcoCentric Design*

Troll Mountain Ski Chalet is a unique timber building with solid laminated wood walls. There are no decks because they would just need shovelling and the owners prefer skiing. The main floor entry is ski-in. The built-in garage means you don't need to waste precious minutes sweeping off your car on powder days and doubles as a great place to tune boards and skis. The main floor has a low vaulted ceiling with exposed timber beams giving the spacious timber frame feel. The plentiful glass takes full advantage of the building's southern exposure. The steel roof has snow-blocks to prevent any danger of snow sliding off on unsuspecting trolls known to frequent the area. The overall design (particularly the roof system) is relatively simple which makes this chalet very cost-effective while being able to enjoy the beauty of a hand-crafted timber frame.



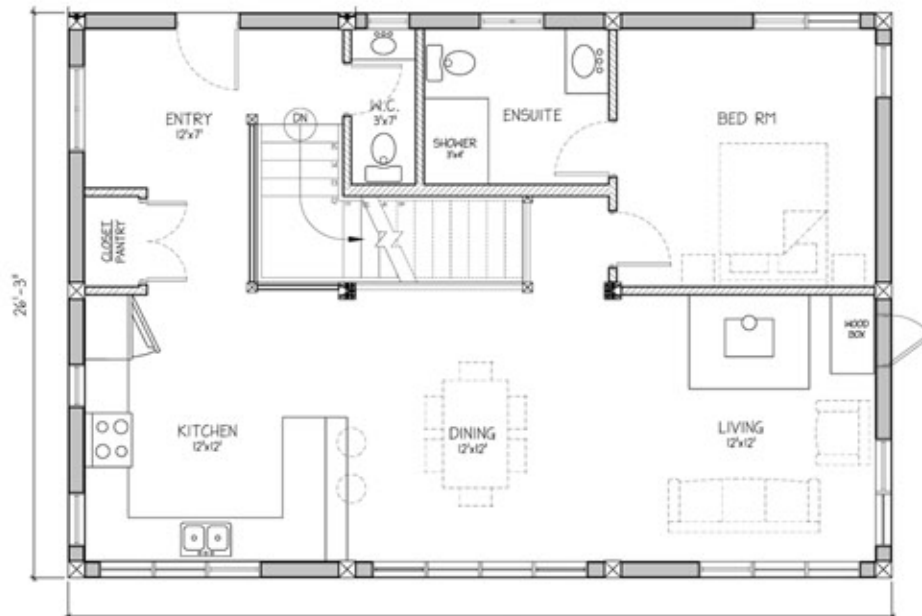
We look forward to working with you!

[www.ZTFrames.com](http://www.ZTFrames.com)

250.243.0055 | cell: 250.392.0103 | fax 250.243.2419 | [info@ZTFrames.com](mailto:info@ZTFrames.com)

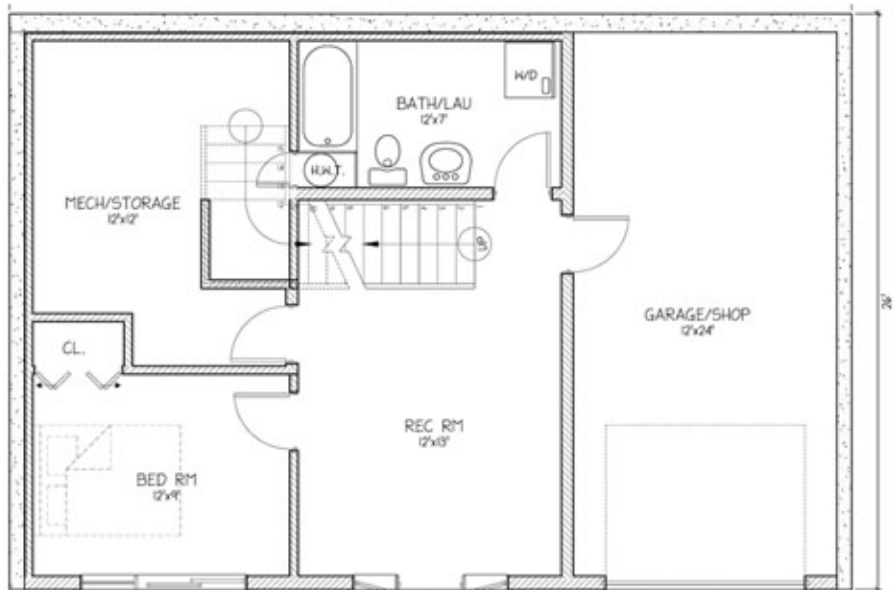
# ZTF Zirnhelt Timber Frames

## *Troll Mountain Ski Chalet*



**Main Level  
Floor Plan**

**Basement Level  
Floor Plan**



*Healthy Homes for Sustainable Living*

**[www.ZTFrames.com](http://www.ZTFrames.com)**

250.243.0055 | fax 250.243.2419 | [info@ZTFrames.com](mailto:info@ZTFrames.com)