

ZTF Zirnhelt Timber Frames

Sustainable by Design

The Winkley Creek

At a Glance:

<i>Main (36' x 36')</i>	<i>1,296 sq ft</i>
<i>Loft (36' x 24')</i>	<i>864 sq ft</i>
<i>Bedrooms</i>	<i>3</i>
<i>Bathrooms</i>	<i>2</i>
<i>Total Living Space</i>	<i>2,160 sq ft</i>
<i>Covered Porches</i>	<i>636 sq ft</i>
<i>Total Footprint</i>	<i>1,932 sq ft</i>



This home designed by: Zirnhelt Timber Frames

The Winkley Creek is a classic Zirnhelt Timber Frame with solid square log infill walls (beetle-killed pine), large shed dormers and spacious covered porches. The remote location overlooking beautiful Quesnel Lake makes for an amazing get-away with water access to the Cariboo Mountains.

The great room is designed for entertaining in all seasons (with the covered side deck as a convenient detour for those wanting to avoid the fray and slip onto the front deck for cocktail hour) and a fireplace to warm up by after a day out in the winter. The covered decks, heavy timber roof system and large overhangs are designed to protect the building for centuries.

Call or email us to start your sustainable building project. Visit our site, meet our crew, and tour a Zirnhelt Timber Frame home.

We look forward to working with you!

www.ZTFrames.com

250.243.0055 | cell: 250.392.0103 | fax 250.243.2419 | info@ZTFrames.com

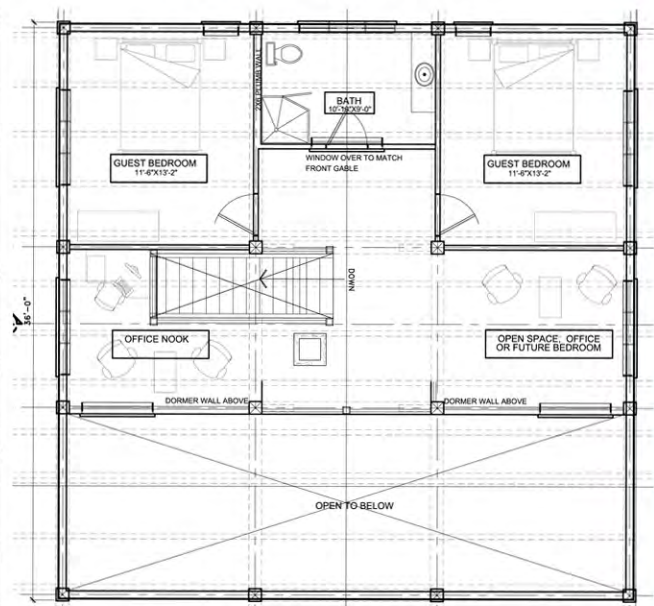
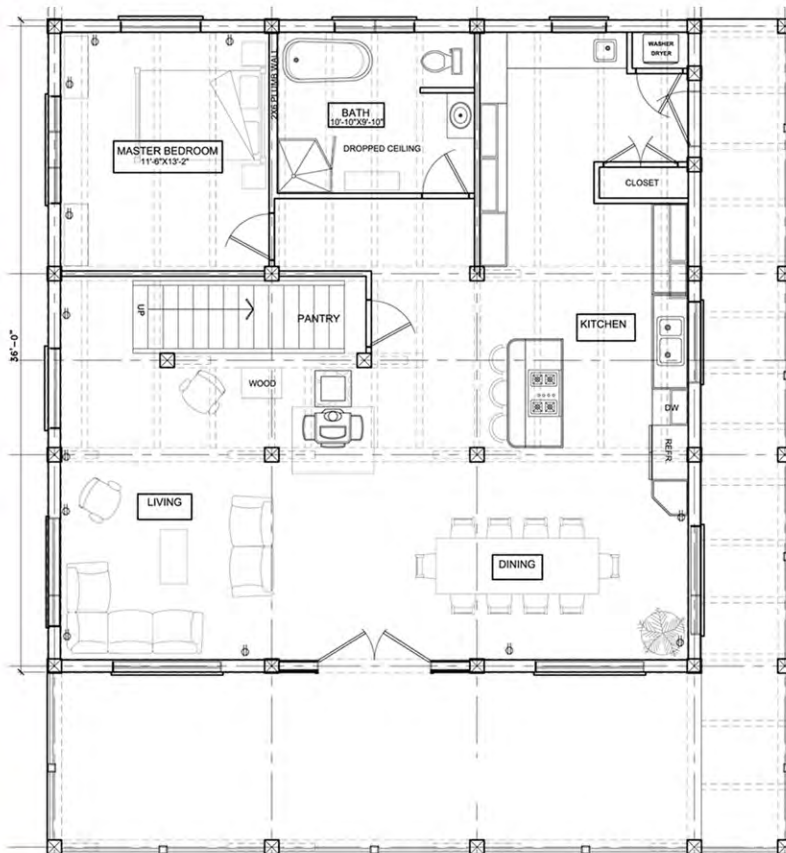
ZTF Zirnhelt Timber Frames

The Winkley Creek



Main Level Floor Plan

Loft Floor Plan



Healthy Homes for Sustainable Living

www.ZTFrames.com

250.243.0055 | fax 250.243.2419 | info@ZTFrames.com

ZTF Zirnhelt Timber Frames

The Winkley Creek



Healthy Homes for Sustainable Living

www.ZTFrames.com

250.243.0055 | fax 250.243.2419 | info@ZTFrames.com