

# ZTF Zirnhelt Timber Frames

## *Powderking Ski Chalet*

*Sustainable by Design*

### *At a Glance:*

Main 26 x 26	676 sq ft
Loft	338 sq ft
Basement 26 x 26	676 sq ft
Bedrooms	4
Bathrooms	2
Total Living Space	1,690 sq ft
more bedrooms optional in basement	



The Powderking Ski Chalet makes exceptional use of a small footprint and is designed to handle a 300 lb snow load. With two small master bedrooms, 2 kids rooms upstairs, and several options for extra bedrooms in the basement, there's room for 2 families plus guests. A large mudroom helps keep the main 26' x 26' living space open (and provides room for skis and gear). In fact, the great room is as spacious as many larger homes. There's room for a hot tub on the front deck and a pool table in the basement. There are many options to modify this plan. For example, you could have just a master bedroom and ensuite upstairs and vault a portion of the living/dining area. In the future, it could be made into a retirement home by adding a main level addition with a master bedroom, similar to the Yukon Phase 2 plan

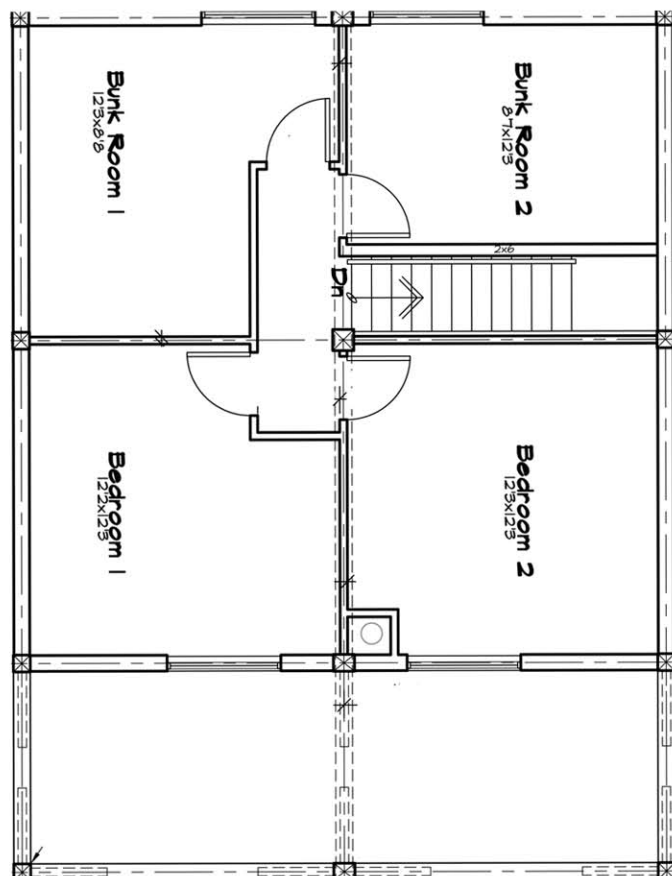
## *Healthy Homes for Sustainable Living*

[www.ZTFrames.com](http://www.ZTFrames.com)

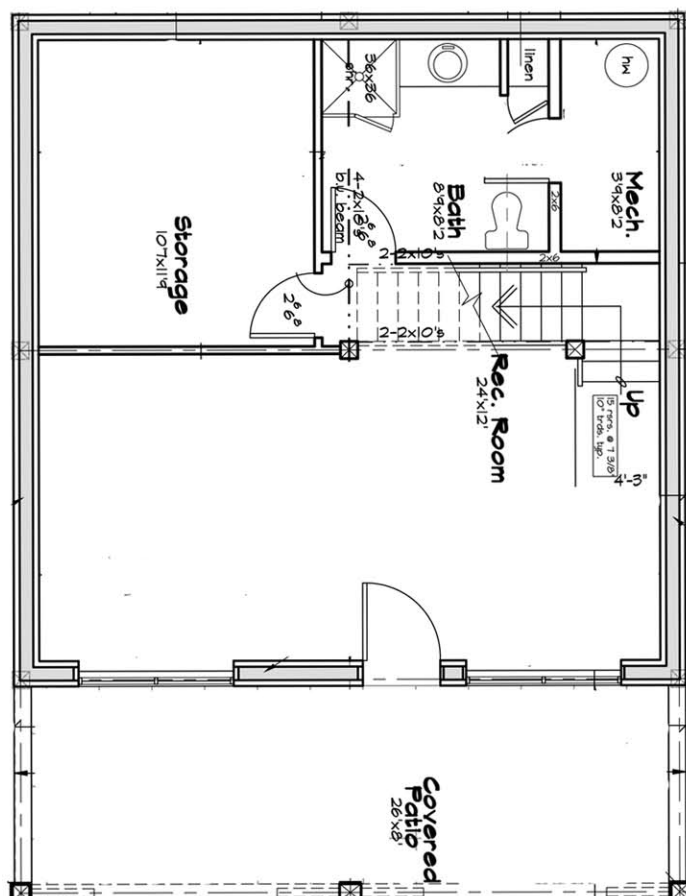
250.243.0055 | fax 250.243.2419 | [info@ZTFrames.com](mailto:info@ZTFrames.com)

# ZTF Zirnhelt Timber Frames

## *Powderking Ski Chalet*



*Loft Level Floor Plan*



*Basement Level Floor Plan*

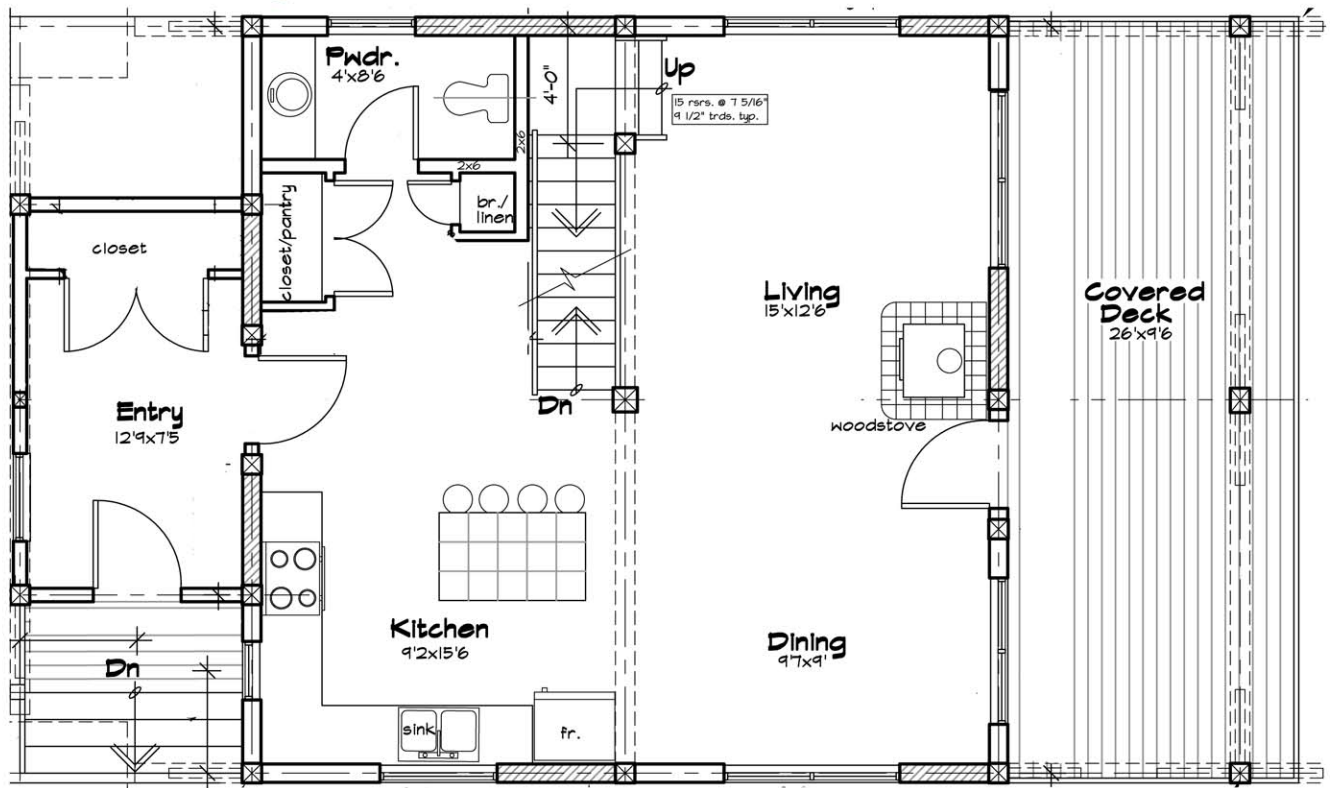
*Healthy Homes for Sustainable Living*

[www.ZTFrames.com](http://www.ZTFrames.com)

250.243.0055 | fax 250.243.2419 | [info@ZTFrames.com](mailto:info@ZTFrames.com)

# ZTF Zirnhelt Timber Frames

## *Powderking Ski Chalet*



Main Level Floor Plan



Front Elevation



Rear Elevation

*Healthy Homes for Sustainable Living*

[www.ZTFrames.com](http://www.ZTFrames.com)

250.243.0055 | fax 250.243.2419 | [info@ZTFrames.com](mailto:info@ZTFrames.com)