

FOX MOUNTAIN

Designed By Zirnhelt Timber Frames Ltd. and Harrison Design



ZIRNHELT Timber Frames

250-296-3499 | ZTFrames.com

AT A GLANCE

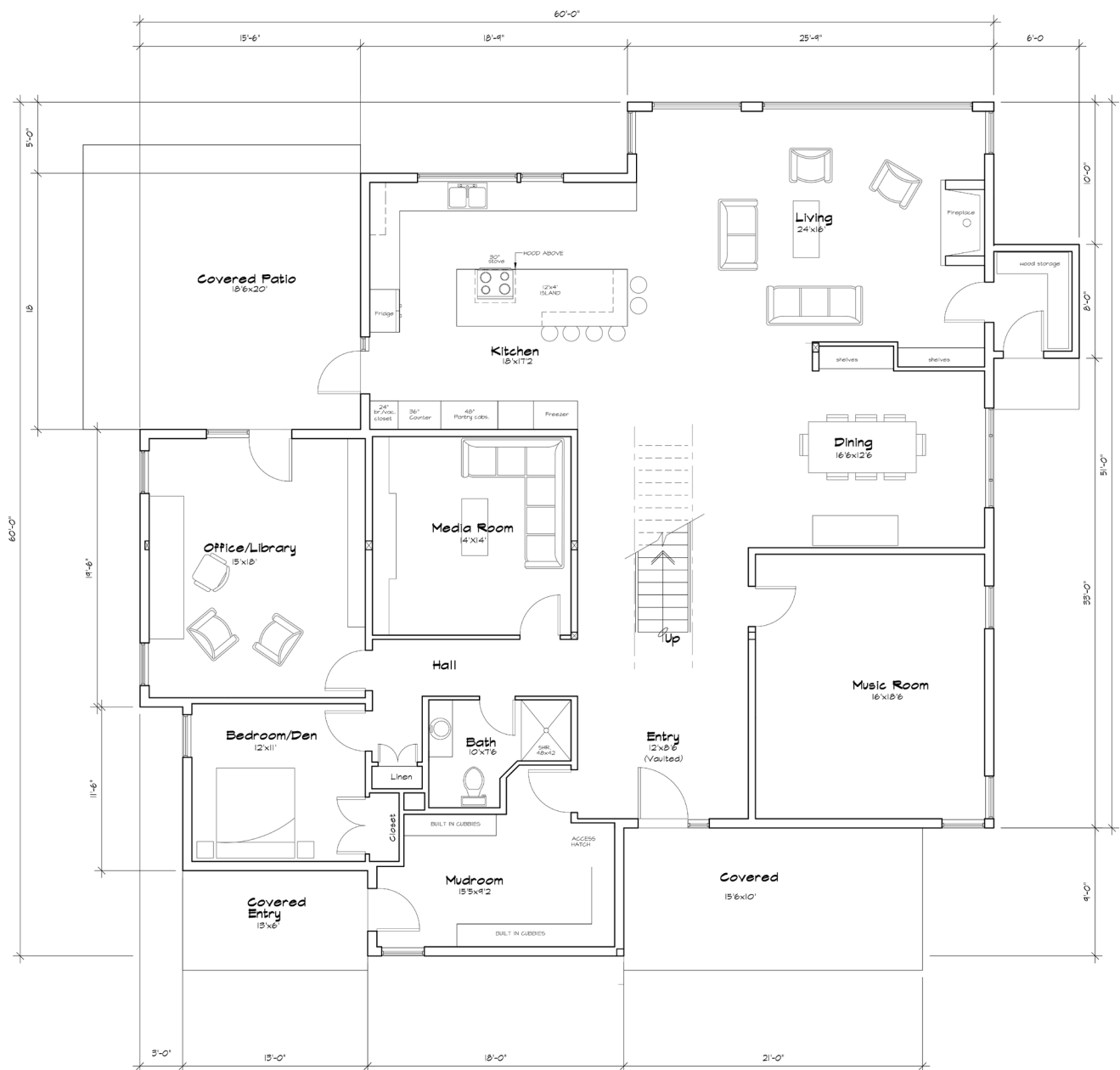
Bedrooms	4
Bathrooms	3
Main	2783FT ²
Upper	1408FT ²
Basement	540FT ²
Total	4730FT ²

This is a fully panelized custom Net-Zero Energy Ready BC Step Code 5 home. This modern beauty combines floor to ceiling glazing, timber and steel trusses and other modern elements into a comfortable family home. In addition to 4 bedrooms there is a spacious library/office room, a music/exercise studio and a dedicated media room. The basement portion is a 540 square foot mechanical and storage room. There's a lot to love about this home which deeply reflects incredible input from the client on their preferences throughout the design and build including the walkout roof top patio off the 2nd floor master bedroom.



CONTACT US

250-296-3499 | INFO@ZTFRAMES.COM | WWW.ZTFRAMES.COM



MAIN FLOOR LEVEL
2783 sq. ft.

CONTACT US

250-296-3499

INFO@ZTFRAMES.COM

WWW.ZTFRAMES.COM

