

PORT ALBERNI

Designed By Zirnhelt Timber Frames Ltd.



ZIRNHELT Timber Frames

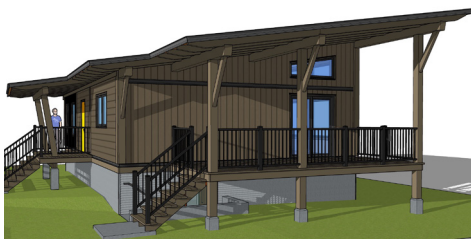
250-296-3499 | ZTFrames.com



AT A GLANCE

Bedrooms	3
Bathrooms	2.5
Main	1176FT ²
Basement	1176FT ²
Total	2352FT ²

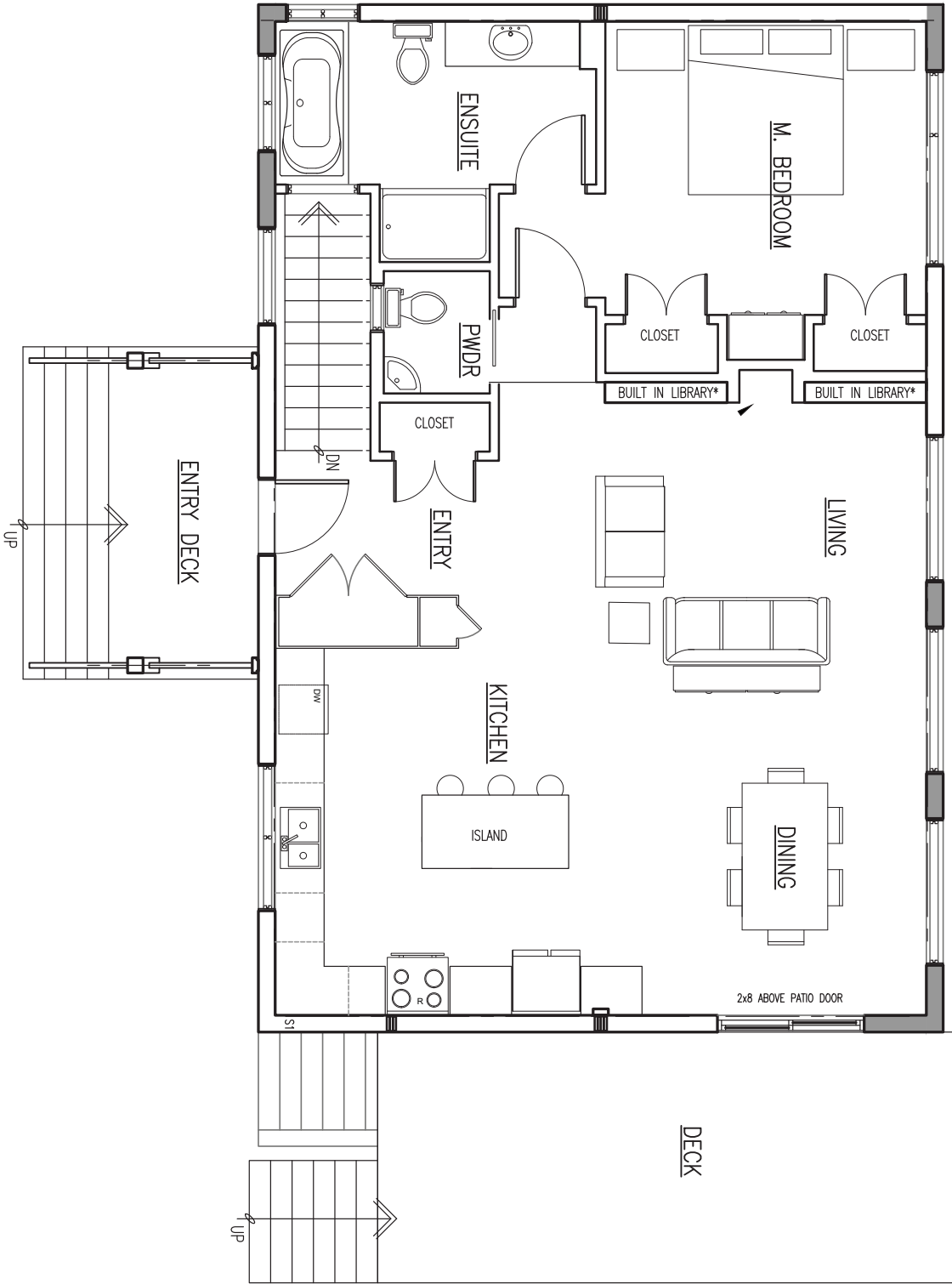
This modern single pitch home is designed to provide daylight to the lower level and external basement access on a flatter lot. The lower level has a large mudroom and plenty of storage. The covered deck orientation provides cover for the basement entrance and doesn't limit light and view from the basement bedrooms while maximizing natural light on the main level.



CONTACT US

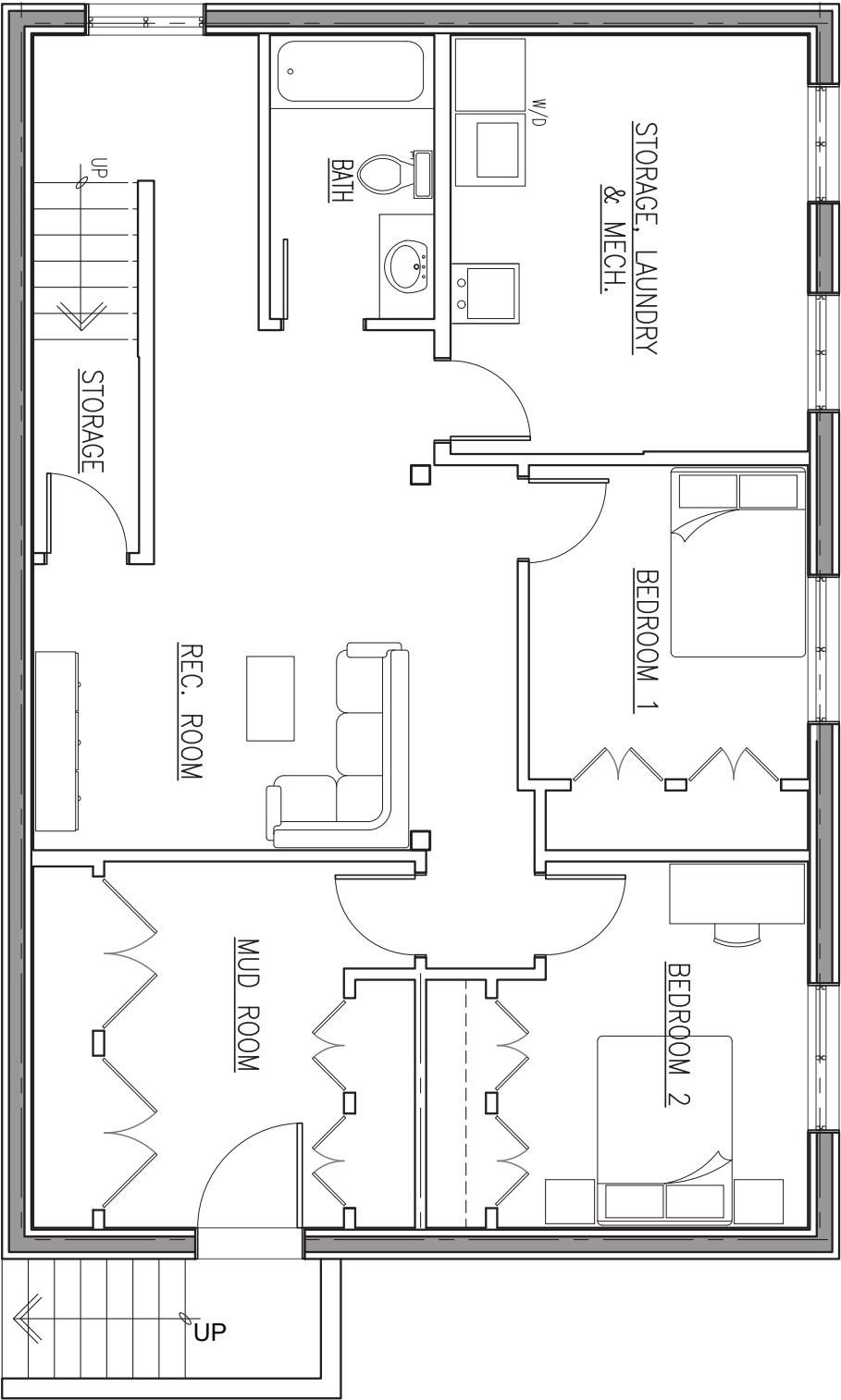
250-296-3499 | [INFO@ZTFRAMES.COM](mailto:info@ztframes.com) | [WWW.ZTFRAMES.COM](http://www.ztframes.com)

Main Floor Plan



CONTACT US

Basement Plan



CONTACT US